

Annual Member **Survey** | 2024



Our member survey helps us respond to the needs of our members, so we can provide relevant and quality education and programming.

Respondents:

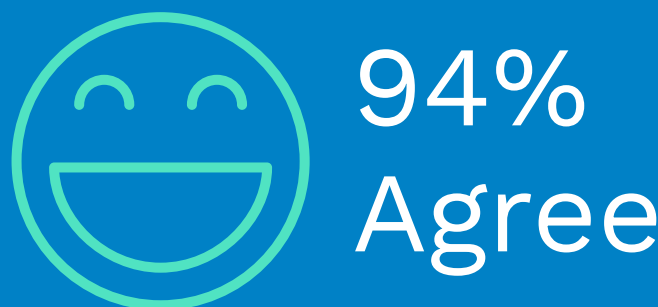
1358



35%
more than 2023

What they said:

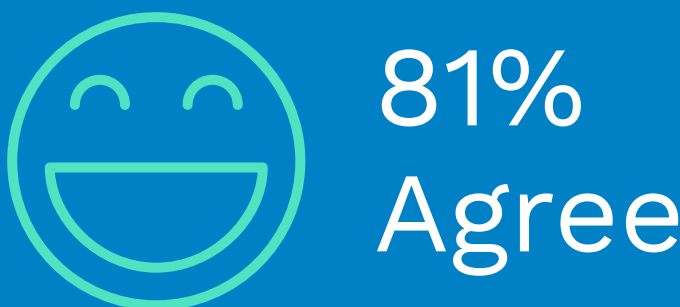
Because of SafeCare BC, our organization's workplace health and safety has improved.



Because of SafeCare BC, I'm more aware of workplace health and safety.



Because of SafeCare BC, I've changed how I work.



Highlights

43%

Engaged with SafeCare BC in the past 12 months.

"I commend SafeCare for the resources that you have provided to us workers in ensuring safe practices are met. Keep up the good work."

According to our respondents, the most pressing safety concerns are:



Mental health and wellbeing

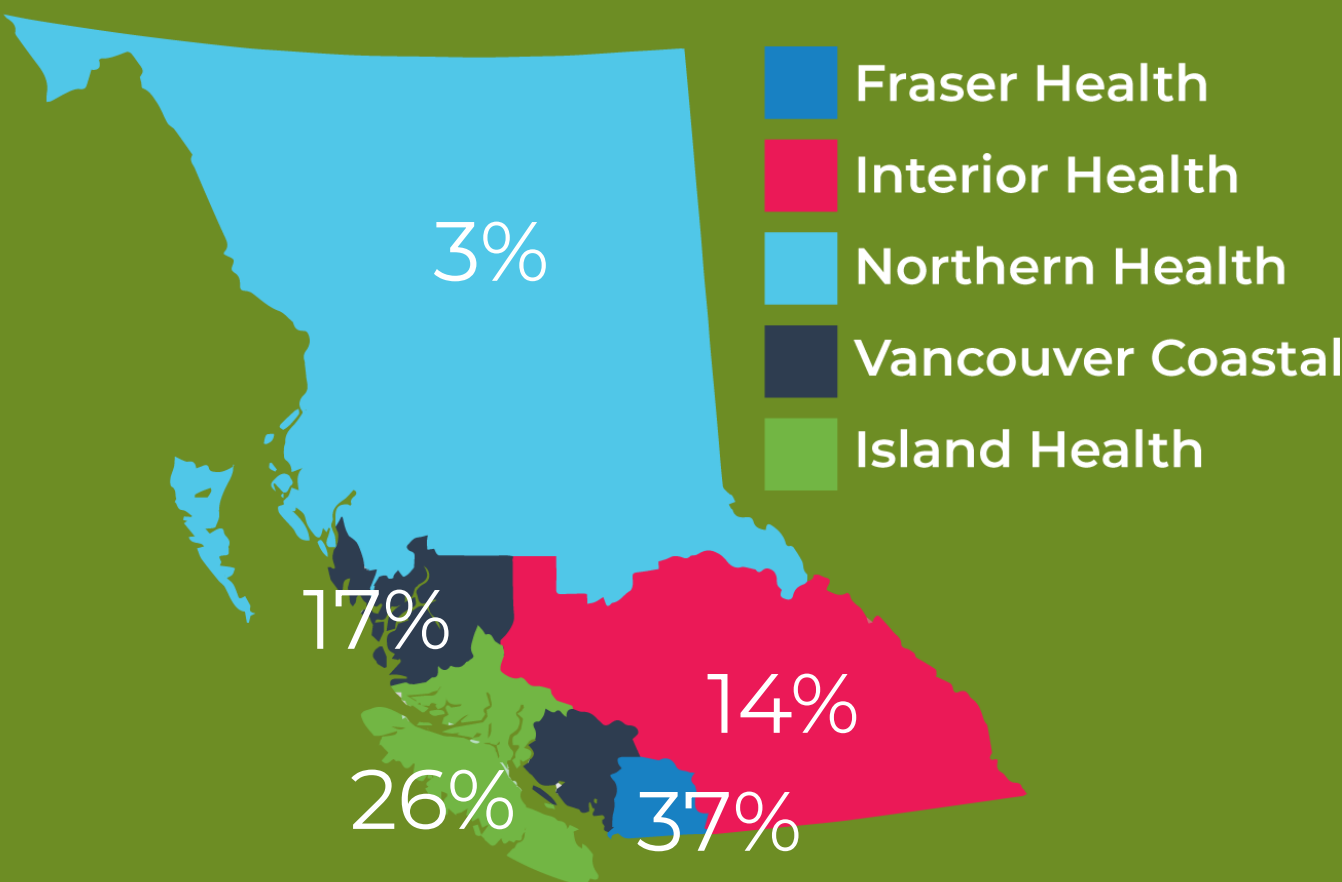


Fatigue and overexertion due to workload

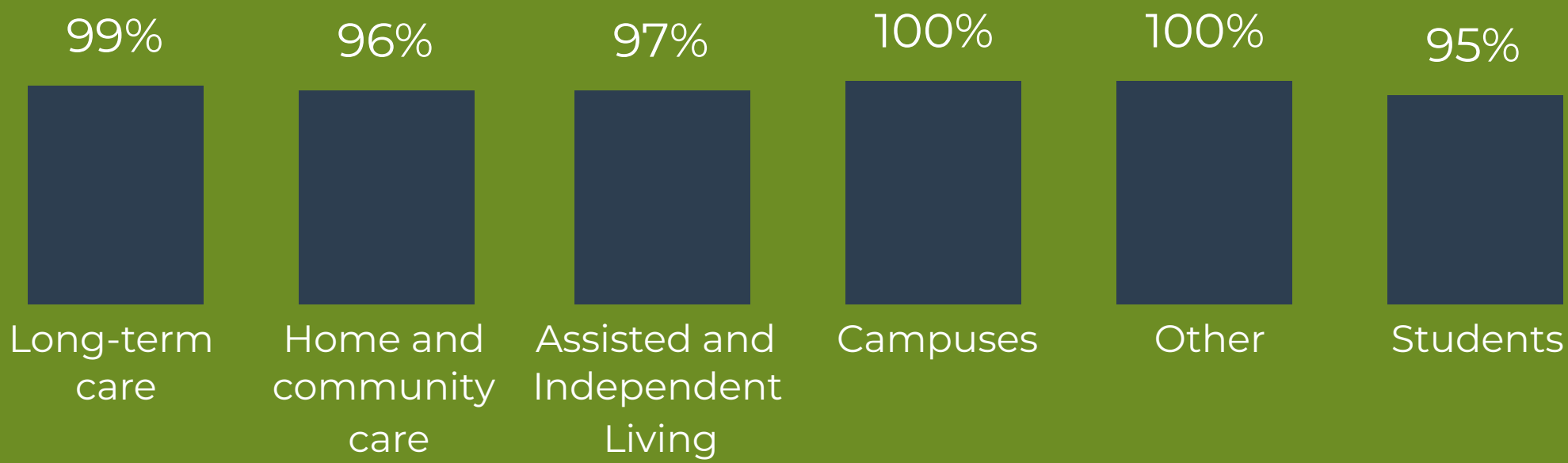


Responsive behaviours towards staff

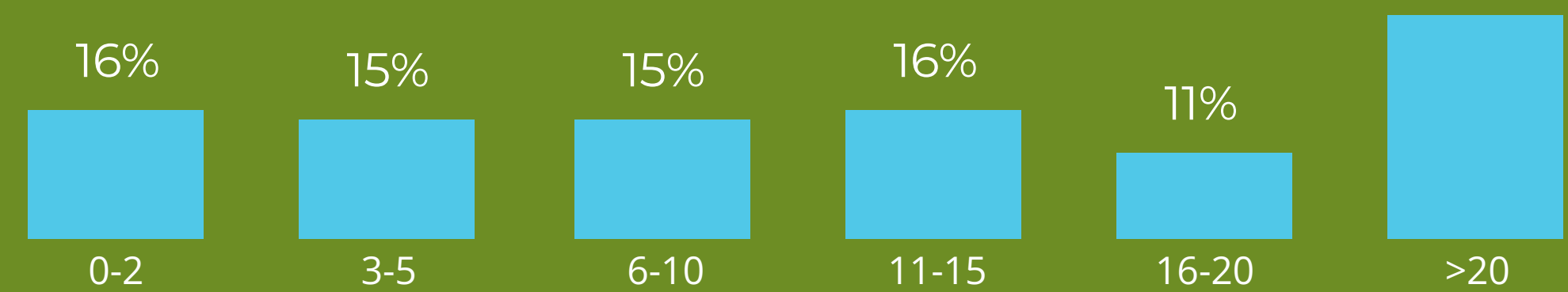
Responses by health authority

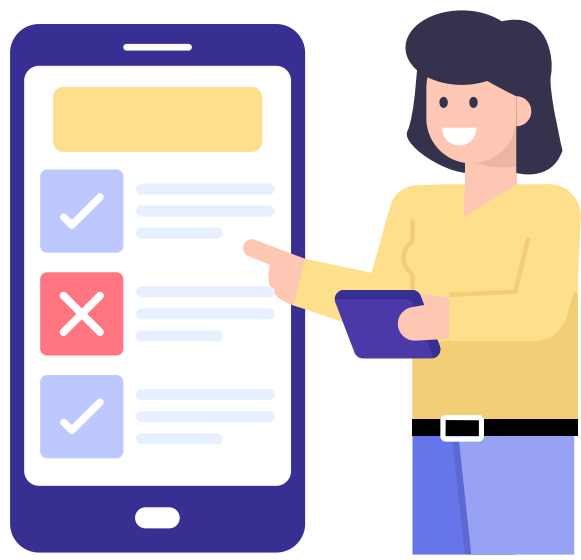


Overall quality rating of education, resources, and support



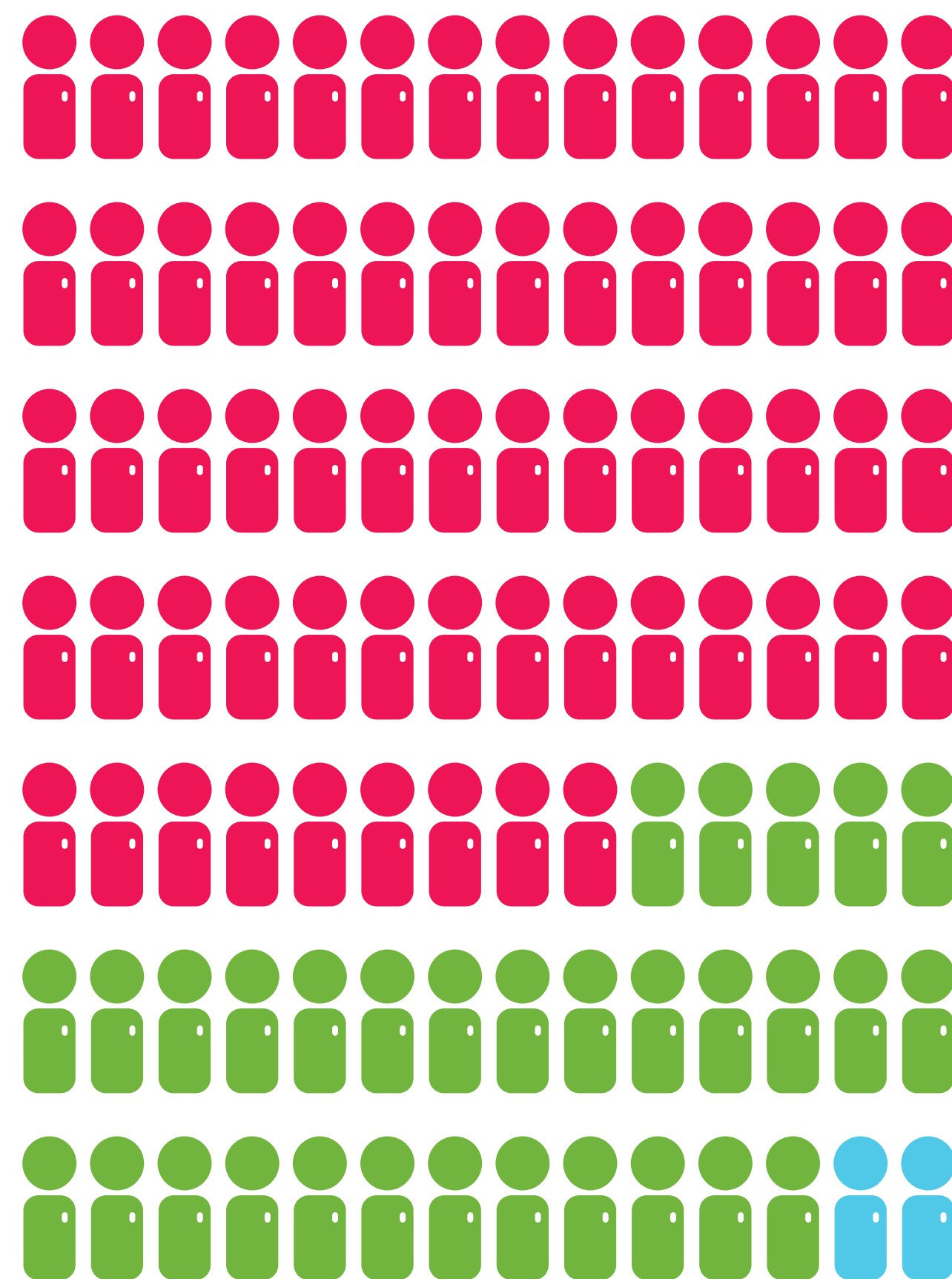
Years in healthcare





Who did we hear from?

Over 1300 members participated, representing a cross-section of roles.



Frontline workers

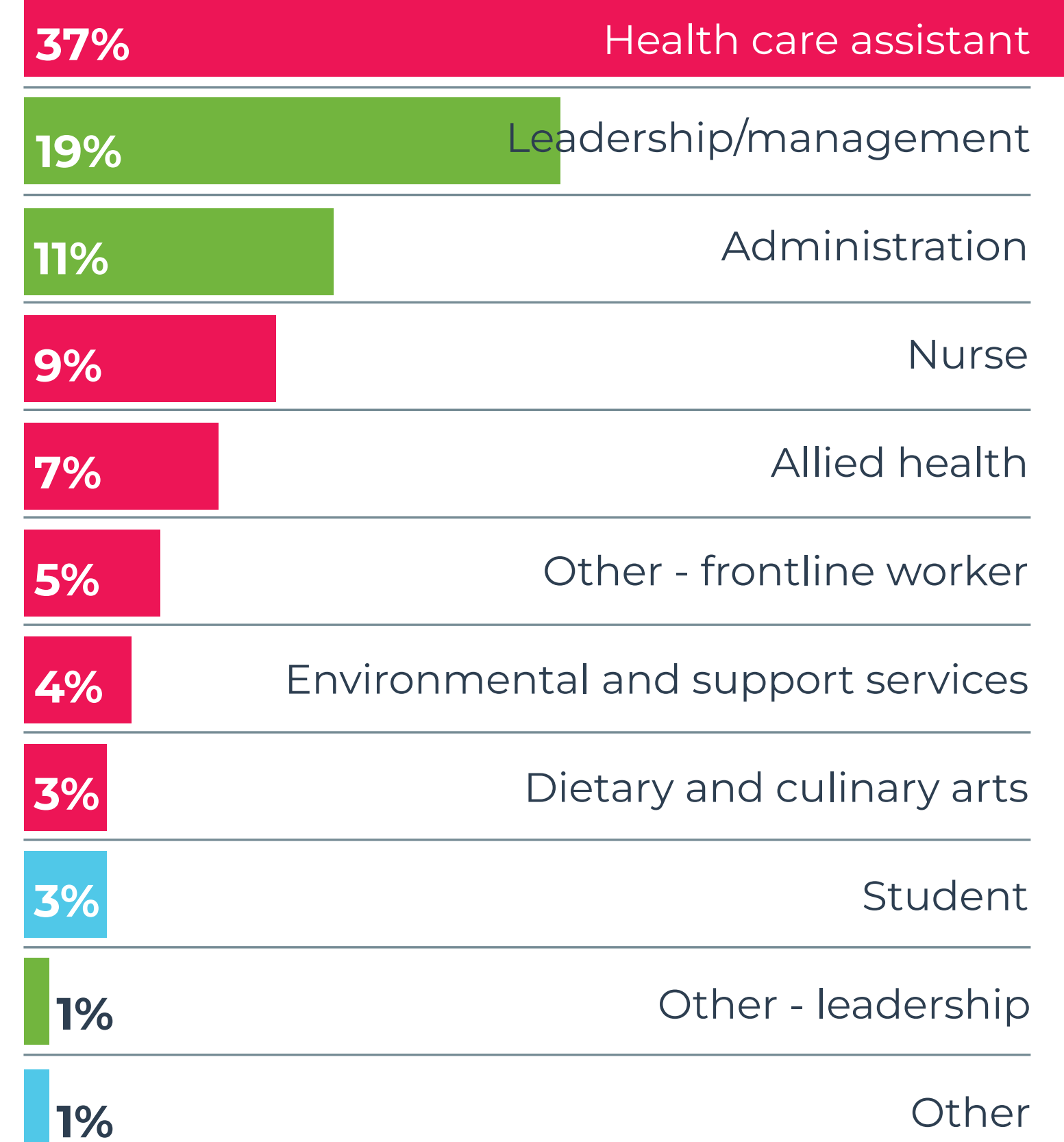
65%

Leadership

31%

Other

4%



SafeCare BC's dedication to providing us with education, resources, and support ensures a safe environment for us as healthcare workers and for our patients. We appreciate how their initiatives and advocacy efforts play a crucial role in fostering a culture of safety and accountability within the healthcare industry.

Thank you!

Impact



94%

Agreed their organization has improved health and safety.



81%

Indicated they have changed how they work due to SafeCare BC.



95%

Had an opportunity to apply what they learned in the workplace.



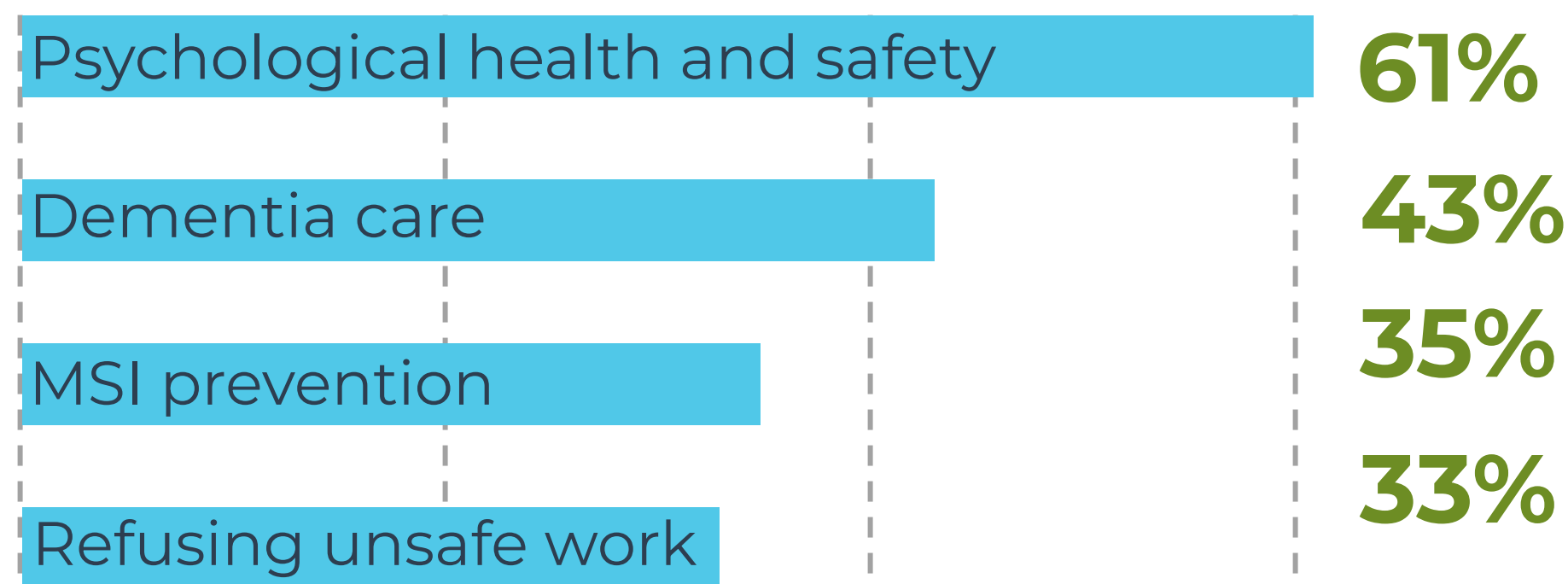
76%

Indicated they were aware of SafeCare BC.

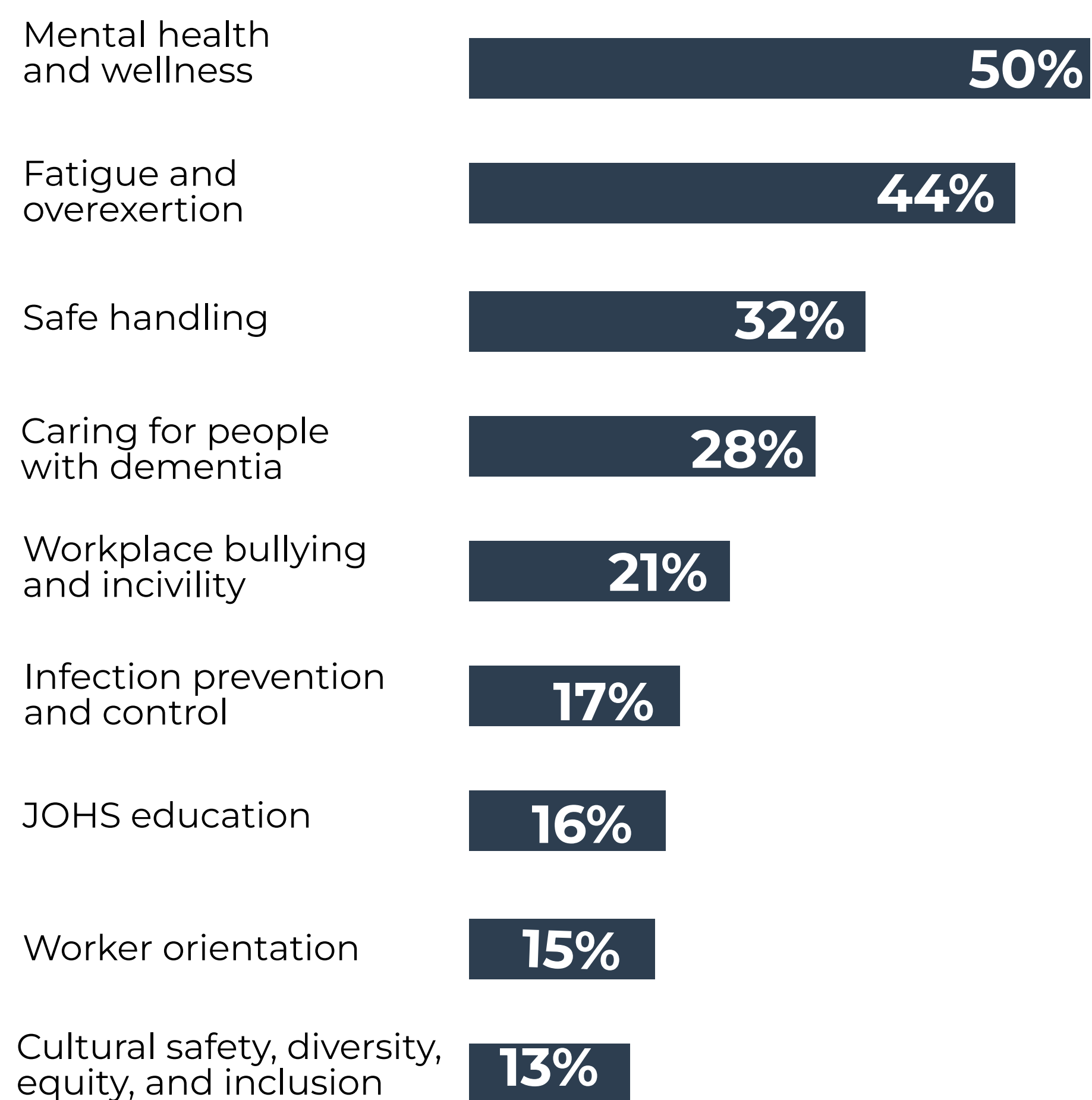
I have learned a lot from SafeCare by attending such events as Hearts and Hands. It has changed the way I work and communicate with those in care and co-workers in general. I have grown so much in the care field because of tips I have learned from SafeCare. The online courses have been really enriching. Particularly around dementia and how to support people in care with this debilitating disease.

PRIORITIES

Most important training areas according to respondents

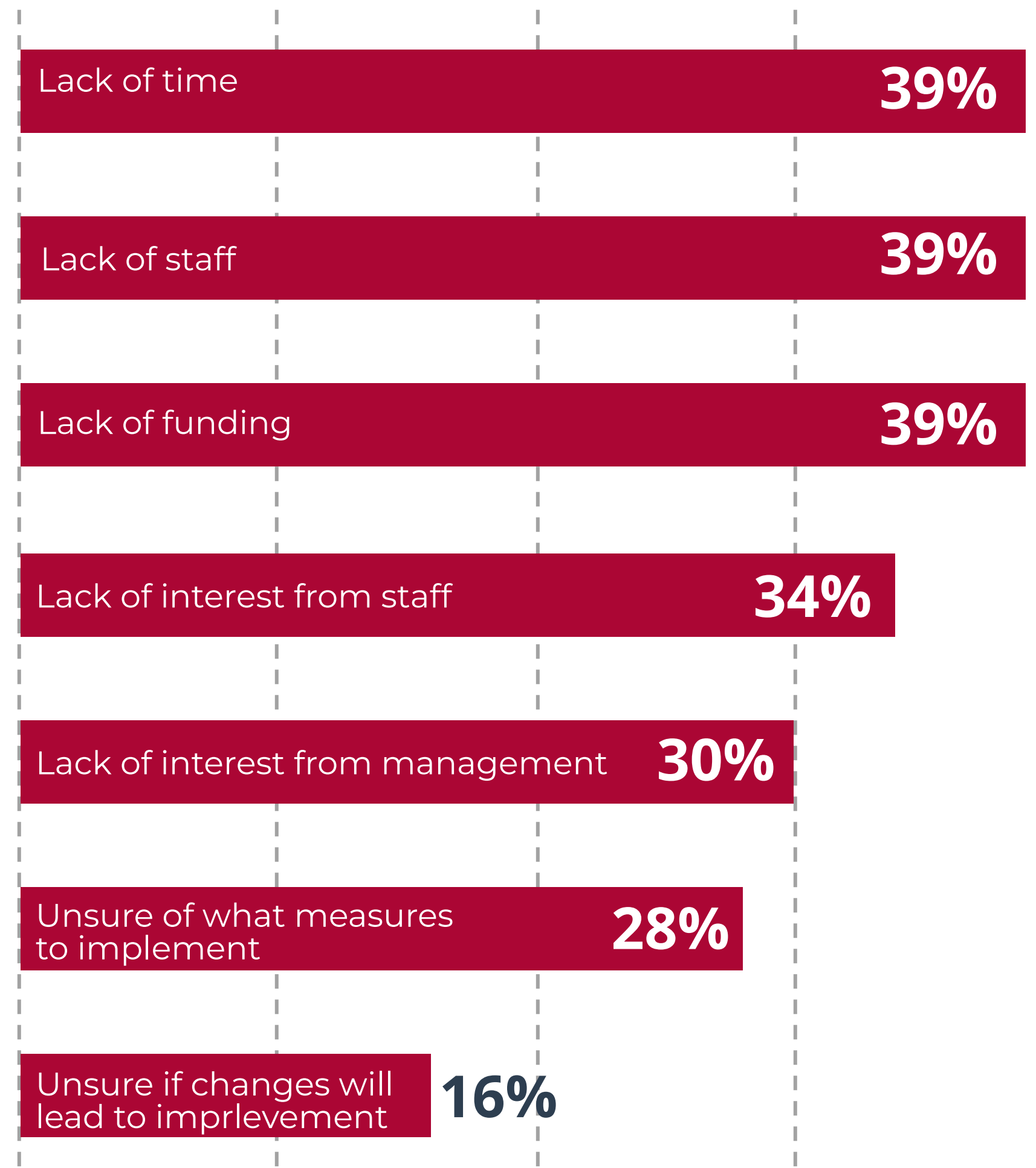


Top safety concerns



BARRIERS

Barriers to implementing health and safety changes



"I appreciate SafeCare BC's efforts to supply healthcare workers with up to date quality education opportunities."



We have always appreciated the support and resources provided by SafeCare BC. An extremely valuable resource!

Need more info?



SAFECARE BC

Safe, health, and injury-free workplaces in continuing care



EMAIL

info@safecarebc.ca



WEBSITE

safecarebc.ca



ADDRESS

1424-4710 Kingsway
Burnaby, BC

Thank you!

Your feedback helps us to improve our services and programs